

Key Stage 2 History Worksheet

Britain since the 1950s

50s



60s



70s



80s



90s

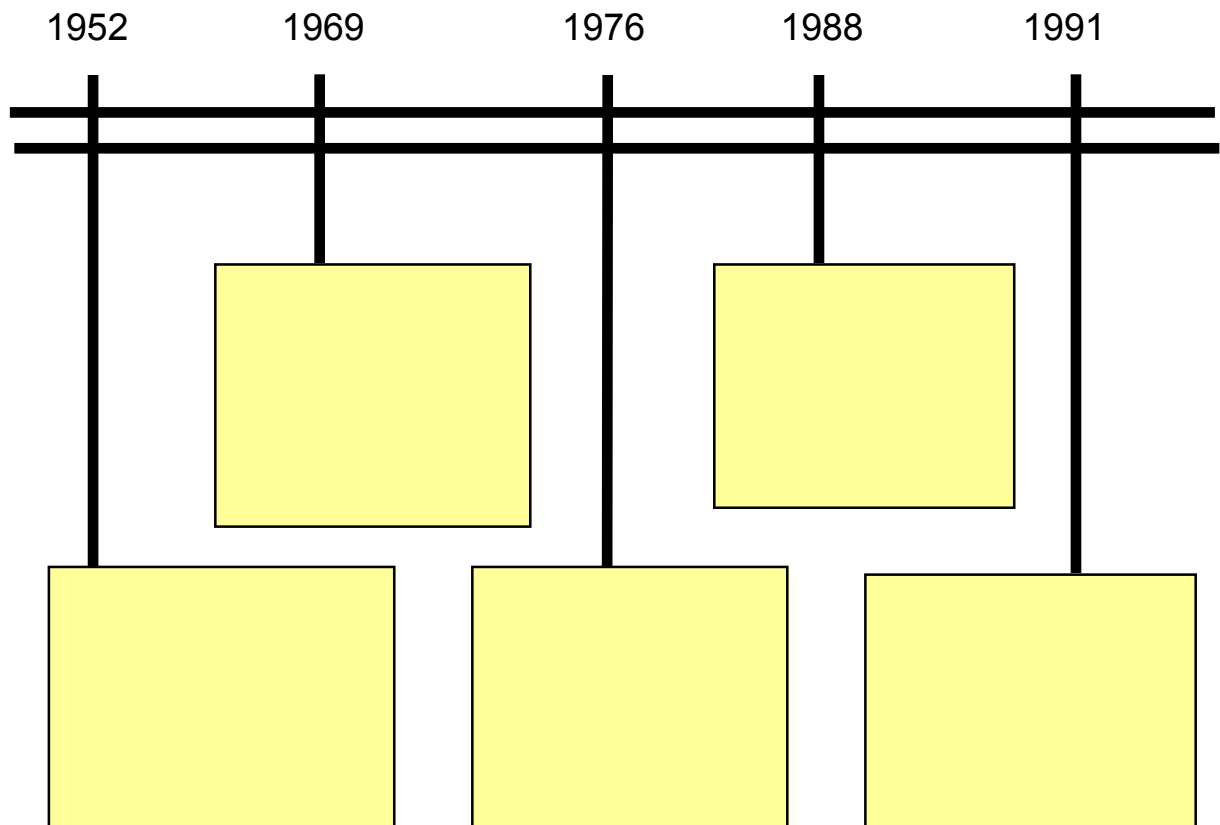
In this worksheet you will be visiting:
Newcastle Story Gallery (Ground Floor)
Fashion Works (Second Floor)

Go to Newcastle Story Gallery.

Find the beginning of the 20th Century section.

Look at the timeline.

Fill in the blanks below.



Enter the Newcastle Story Gallery and walk to the 1946-1959 section.

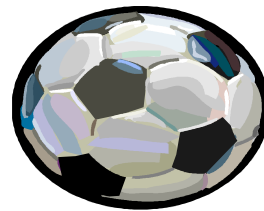
1950s

In which three years in the 1950s did Newcastle United win the FA Cup?

.....

.....

.....



Can you find the iron lung in the hospital area, do you know what it was used for? Write your ideas in the space below.

In the 1950s there were a lot of changes in health care. What can you see in the 1950s section of the gallery to show how health care changed since the pre war years?

Vitamins

Medicine

Toothache

Eye sight.....

1960s

Go to the 1960-1969 section.

Look in the display behind the glass.

Look at the television set. How is it similar or different to modern Televisions today?

Write your answers in the table below.

Similar	Different

Draw something from this area that we do NOT use today.



Draw something we might use instead



As you enter the Tardis 'police box' have a look at the text on the wall. Can you find out how many cinemas there were in Newcastle in the 1960's?

.....

Walk into the 60's music area.

Read the text on the wall and see if you can find the name of the famous band that originated in Newcastle?

.....

1970s

Go to the 1970-1979 section.

Look at the information board.



What year was the miner's strike?

.....

What was Decimalisation and what year was it introduced?

.....
.....

What year did the Conservatives win the election?

.....



The Hoppings Fair

Find the number of visitors that came to the fair in 1979.

.....

How many rides were there at the fair in 1979?

.....

Census of 1971

The population of Newcastle today is approximately 797,000.

Can you find what the population of Newcastle was in 1971?

.....

Go to the 1980s-today section.

1980s

What year did the metro first open?

.....

What year was the first Great North Run?

.....



1990s

Look at the display behind the glass.

What year did Princess Diana die?

.....

What else happened in the news in the 90s?

Design a newspaper cover with a major news story on it.

<div data-bbox="833 1220 1382 1339"></div>	
<p>Date:</p> <p>Price:</p>	<div data-bbox="1136 1370 1382 1644"></div>
.....
.....
.....
.....
.....
.....
.....
.....
.....

Clothing

Go to the Fashion Works Gallery on the Second Floor.

Go to the rotating pillars.



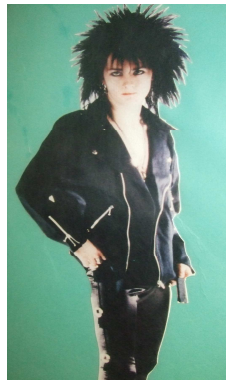
Match up with lines the clothes to each decade.

1950s



1960s

1970s



1980s

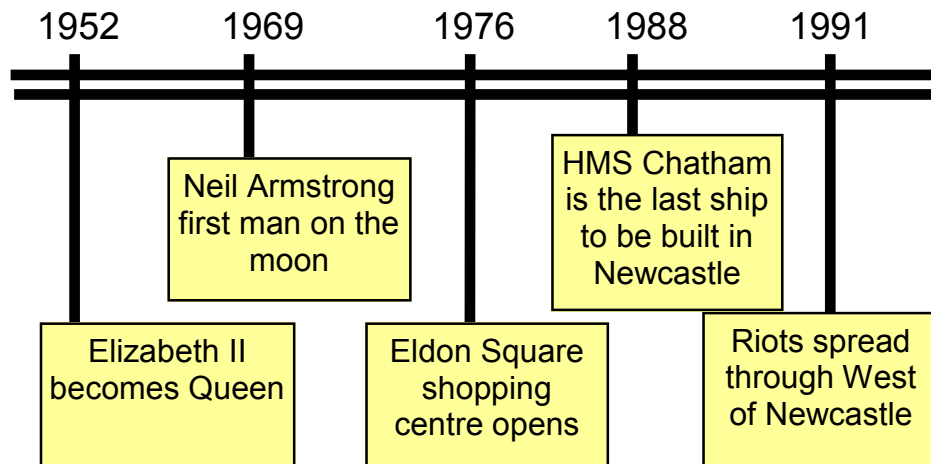
1990s



Think about everything you have seen today. What do you think the most important change was between 1950 and today.

.....
.....
.....
.....

Teacher's answers



1950s

In which three years in the 1950s did Newcastle United win the FA Cup?

1951, 1952 and 1955

Can you find the iron lung in the hospital area, do you know what it was used for?

The iron lung was used to treat people who could breathe on their own.

In the 1950s there were lots of changes in health care. What can you see in the 1950s section of the gallery to show how health care has changed since the pre war years?

Vitamins - school free milk

Medicine - free prescriptions

Toothache - dentist

Eye sight - glasses

Teacher's answers (Continued)

1960s

Look at the television set. How is it similar or different to modern Televisions today? Write your answers in the table below.

Similar	Different
Has buttons Still has a large screen	Thicker Plastic No remote

As you enter the Tardis 'police box' have a look at the text on the wall. Can you find how many cinemas there were in Newcastle in the 1960's?

17

Read the text on the wall and see if you can find the name of the famous band that originated in Newcastle?

The Animals

1970s

What year was the miner's strike?

1973-74

What was Decimalisation and what year was it introduced?

Decimalisation was the changing of money to pounds and pence in 1971.

What year did the Conservatives win the election?

1979

The Hoppings Fair

Find the number of visitors that came to the fair in 1979.

1,250,000

How many rides were there at the fair in 1979?

86

Census 1971

Can you find what the population of Newcastle was in 1971?

219, 890

Teacher's answers (Continued)

1980s

What year did the metro first open?

1980

What year was the first Great North Run?

1981

1990s

What year did Princess Diana die?

1997

Clothes

Match up clothes to each decade

1950s

1960s

1970s

1980s

1990s

